



# HT-R1, HT-R2 Tapener



## INSTRUCTION MANUAL



**WARNING**

BEFORE USING THIS TOOL, STUDY THIS MANUAL TO ENSURE SAFETY WARNING AND INSTRUCTIONS.

KEEP THESE INSTRUCTIONS WITH THE TOOL FOR FUTURE REFERENCE.

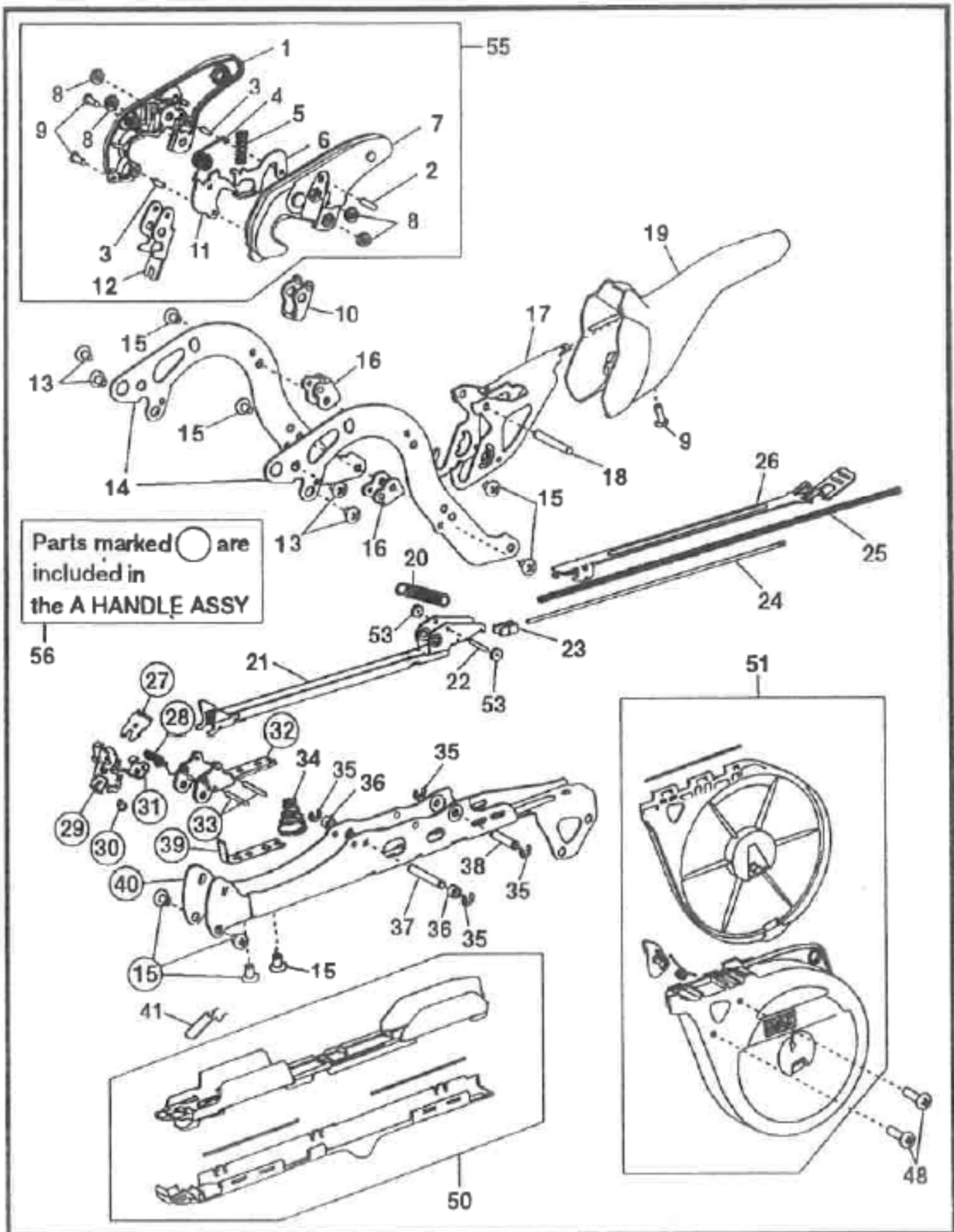
## SPECIFICATIONS

<i>Name</i>	HT-R1	HT-R2
<i>Dimensions</i>	148mm H x 353mm L x 35mm W	161mm H x 392mm L x 35mm W
<i>Staples Used</i>	MAX STAPLES 604C-L (4,800 pcs) MAX STAPLES 604E-L (4,800 pcs)	
<i>Number of Staples Loaded</i>	MAX STAPLES 604C-L 200 pcs/stick MAX STAPLES 604E-L 172 pcs/stick	
<i>Tape Used</i>	MAX TAPE-10, 0.1mm T x 11mm W x 40m L (white) MAX TAPE-15, 0.15mm T x 11mm W x 26m L (blue) MAX TAPE-25, 0.25mm T x 11mm W x 16m L (red)	MAX TAPE-215, 0.15mm T x 12mm W x 55m L (white) MAX TAPE-225, 0.25mm T x 12mm W x 33m L (blue)
<i>Weight</i>	420 grams	445 grams
<i>Bundling Limit</i>	Maximum 45mm $\phi$ x parallel 20mm $\phi$	Maximum 45mm $\phi$ x parallel 20mm $\phi$
<i>Blade</i>	MAX™ Tapener HT-R Serrated Blades	MAX™ Tapener HT-R Serrated Blades
<i>Staple's Full-Scale Figure</i>	<p>604C-L                      604E-L</p> <p>0.3 6 0.5                      0.3 6 0.6</p>	

## **PARTS LIST**

<b>Index No.</b>	<b>Parts Code No.</b>	<b>Description</b>
1	HT11672	B CASE S
2	FF31714	STRAIGHT PIN 1714
3	FF31712	STRAIGHT PIN 1712
4	KK33402	TORSION SPRING 3402
5	KK29130	COMPRESSION SPRING 9130
6	HT11670	LOCK PLATE S
7	HT11627	A CASE
8	CC43107	NAT M4(3)
9	AA05719	+PH TAP SCREW 3x8 (P)
10	HT11632	CLINCHER
11	HT11622	TAPE CATCH
12	HT11671	TAPE PLATE S
13	AA25537	SCREW BIND M4x6
14	HT11618	CLINCHER ARM
15	AA05716	SCREW BIND 4x6 (S-TIGHT)
16	HT11619	ARM SUPPORT
17	HT11637	B HANDLE
18	FF31713	STRAIGHT PIN 1713
19	HT11638	GRIP
20	KK13390	EXTENSION SPRING 3390
21	HT70061	MAGAZINE UNIT
22	FF31716	STRAIGHT PIN 1716
23	HT11611	PUSHER
24	HT11610	SPRING GUIDE ROD
25	KK29131	COMPRESSION SPRING 9131
26	HT11609	STAPLE COVER
27	PRODUCT	CUTTER
28	KK34099	TORSION SPRING 4099
29	HT70070	TAPE GUIDE S UNIT
30	FF41740	STEP PIN 1740
31	HT11596	TAPE GUIDE SUPPORT
32	HT11673	TAPE GUIDE BASE S
33	FF31711	STRAIGHT PIN 1711
34	KK83018	CONICAL SPRING 3018
35	JJ10103	E-RING 3.2
36	HT11615	ROLLER
37	FF31643	STRAIGHT PIN 1643
38	FF31644	STRAIGHT PIN 1644
39	HT11592	DRIVER
40	HT11591	A HANDLE
41	HT11603	TAPE SPRING
48	AA05715	SCREW BIND 4x16 (P)
50	HT70064	TAPE HOLDER ASSY
51	HT70065	BOBBIN CASE ASSY (HT-R)
51	HT70067	BOBBIN CASE ASSY (HT-R2)
53	GN12070	RUBBER WASHER 1.7x6x2
55	HT70068	TAPE CATCH ASSY
56	HT70071	A HANDLE ASSY

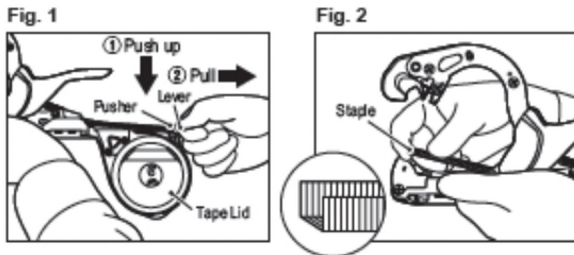
# PARTS DIAGRAM



## HOW TO USE

### How to Load Staples

1. Hold the body with one hand, push the lever down and pull the lever towards your direction (Fig. 1).  
\* The pusher cannot be removed from the main body.
2. While holding the tool in one hand, insert staples into the magazine so that staples' legs point upward, and then set them in the pusher unit by sliding lever. You can load 604C type of 604E type (Fig. 2).

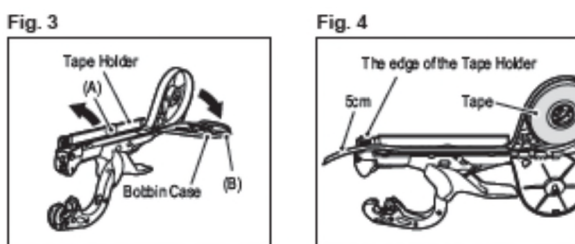


### Caution

- Be sure the USE the specified tape.
- NEVER apply your fingers near the front end of the magazine unit because there is a serrated blade and the staple ejection port nearby.
- Do not insert a branch near the cutting blade. Doing so may damage the cutting blade or peripheral parts.

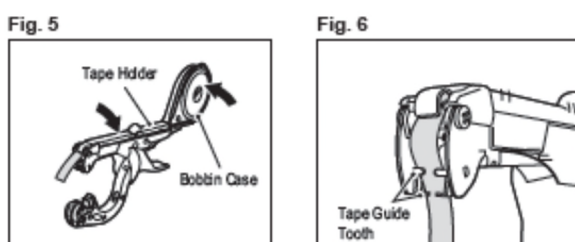
### How to Open Tape Holder and Bobbin Case

Put your fingers on UP parts (A) (B), then open the cover (Fig. 3)



### How to Load the Tape

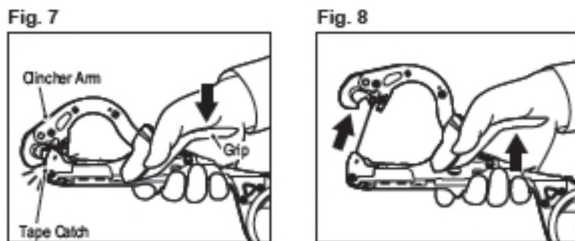
1. Open the tape holder and bobbin case, and insert the tape roll into the bobbin case (Fig 4).
2. Pull tape into the tape holder and make sure approximately 5cm of tape hangs out of the edge of the tape holder.
3. Load the tape through the two guides of the tape guide (Fig 5, 6).



## How to Pull Out Tape

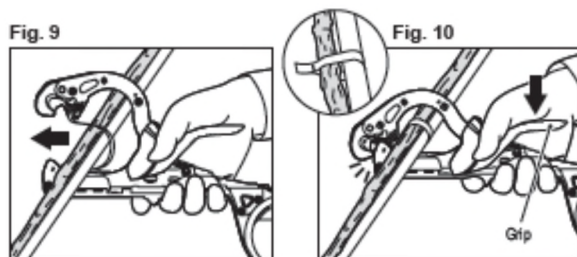
1. Squeeze the handle so that the tape catch will catch the tape end deep enough (Fig 7).
2. Release the handle as explained. The tape will pull out (Fig 8).
3. If the tape catch unit does not catch the tape end when you squeeze the handle, please squeeze the handle harder several more times, and the tape catch will return to its normal position (this is not a trouble with the tapener).

**Note:** this should be done only when the tape catch does not catch the tape end.



## How to Bind Objects

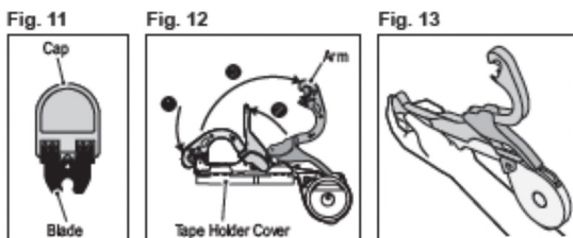
1. Press the tape against the object until it is positioned inside the tapener (Fig 9).
2. Then fully squeeze the grip with the tape positioned centrally, and the object will be bound by both the tape and staple, simultaneously the tape is cut off (Fig 10).



## How to Change Blade

### Preparation

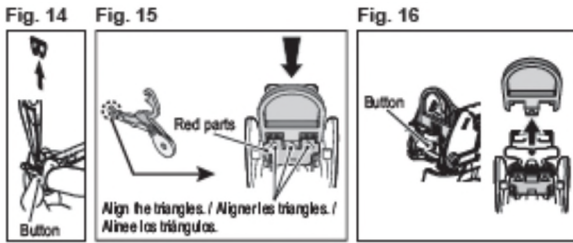
1. Do not remove the cap from the blade (Fig 11).
2. Remove the tape and staples.
3. Open the arm and tape holder cover (Fig 12).
4. As shown in Fig 13, hold the main body with one hand (Fig 13).



### Change the Blade

1. Press the button and pull out the old cutting blade.
2. Press the button and push the cutting blade cap deep enough so that three triangles are aligned (correct position shown in the figure) (Fig 15).

- Release the button and pull off the cutting blade cap (Fig 16).

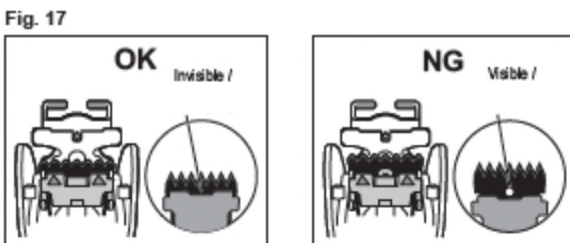


## **WARNING**

- **Keep your fingers away from the cutting blade.**

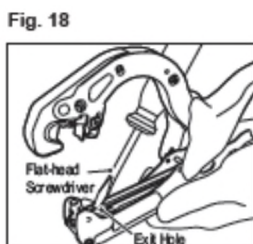
## **Confirmation**

- Confirm that the round hole of the cutting blade is completely hidden (Fig 17).



## **How to Remove Jammed Staples**

While the pusher unit is open, remove any loaded staples, and then remove the stuck staple with a small screwdriver (Fig 18).



## **AFTER USE**

In order to maintain proper performance, apply oil to the specified locations after each use (Fig 19).

